

Motor Vehicle Crash Deaths in Nebraska

Nebraska CODES Traffic Safety Facts

In 2010, Nebraska motor vehicle crash deaths dropped to 190, the second lowest total since recordkeeping began 73 years ago.

Figure 1 Safety Belt Usage vs. Crash Death Rate per 100 Million Miles Traveled, Nebraska, 2000-2010

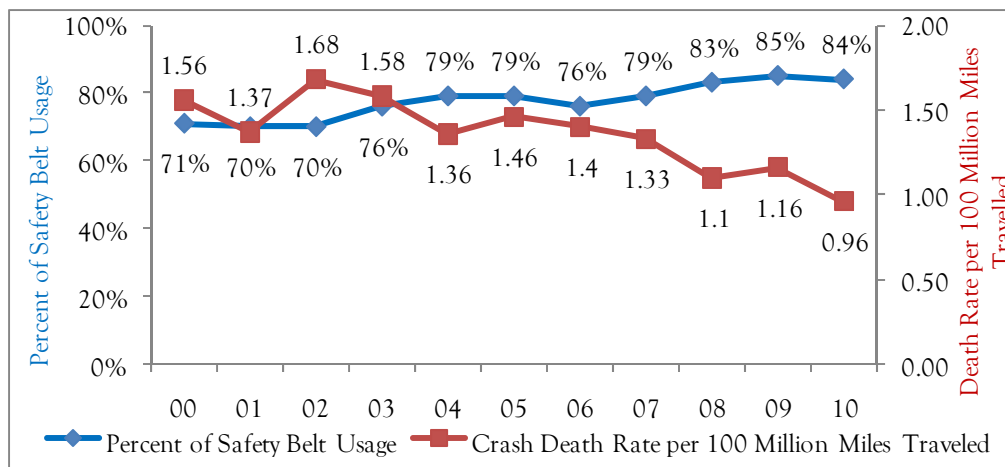
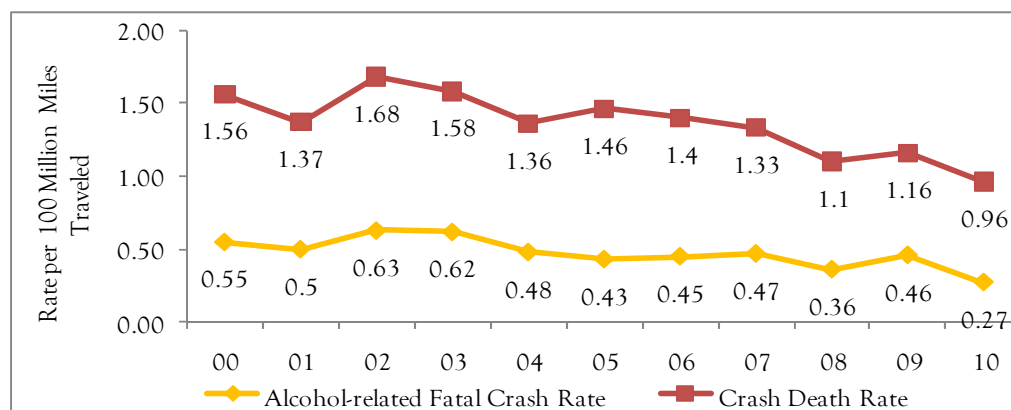


Figure 2 Crash Death and Alcohol-related Fatal Crash Rate per 100 Million Miles Traveled, Nebraska, 2000-2010



Special points of interest:

- Both numbers of injuries and deaths resulting from motor vehicle crashes have declined about 40% in the last decade.
- Percentages of people who engaged in risky behavior (not wearing seat belt and alcohol use) declined, especially in the last 5 years (figure 1 & 2).
- Case-fatality rate for patients at trauma care hospitals who were severely injured has declined by about 10%.

The decline in motor vehicle crash deaths is a success. Many factors may have contributed, including:

- Increasing seat belt usage
- Decreasing alcohol involvement
- Improved trauma care
- Stronger traffic safety laws and stricter enforcement
- Timely EMS response
- Higher vehicle safety standards
- Safer road design
- Public awareness campaigns



Nebraska Crash Outcome Data Evaluation System
 Phone: (402) 471-4377
 Fax: (402) 471-1371