



AGING IN AMERICA AND ITS IMPACT ON LONG TERM CARE REDESIGN IN NEBRASKA

**LTC REDESIGN STAKEHOLDER MEETING
MARCH 6, 2019**

3/7/2019

www.nasuad.org

2017 PROFILE OF OLDER AMERICANS

10% of seniors are abused, neglected, and/or exploited annually

13.6% seniors are threatened by hunger

4.6 million live in poverty

85% have at least one chronic condition 60% have at least two

34% of older women live alone

23% are Minorities
9% African American
8% Hispanic
12 million seniors
4% Asian or Pacific Islander

12 million receive both Medicare and Medicaid benefits

Median income
\$31,618 males
\$18,380 females

1 million have primary responsibility for grandchildren

6% of the labor force are older adults



Sources: ACL, <https://acl.gov/aging-and-disability-in-america/data-and-research/profile-older-americans>; Feeding America, <https://www.feedingamerica.org/research/senior-hunger-research/senior>; National Institute on Aging, <https://www.nia.nih.gov/health/supporting-older-patients-chronic-conditions>; <https://www.medicaid.gov/medicaid/eligibility/medicaid-enrollees/index.html>; NCEA, <https://ncea.acl.gov/whatwedo/research/statistics.html#prevalence>

FUNDING FOR SENIORS NOT KEEPING PACE

Percent of Seniors Continues to Grow

2010



ONE IN EIGHT
ADULTS 65+

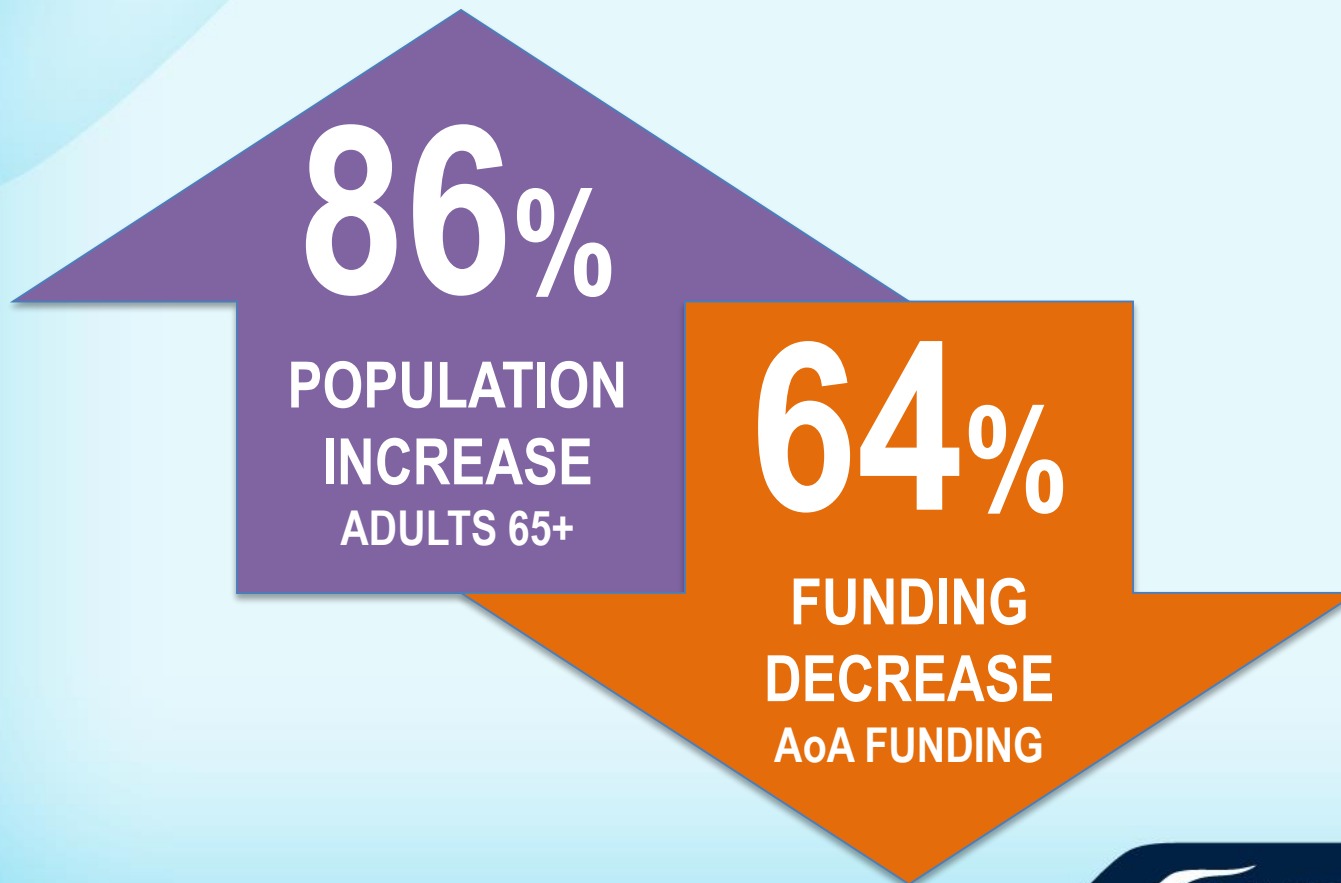
2032



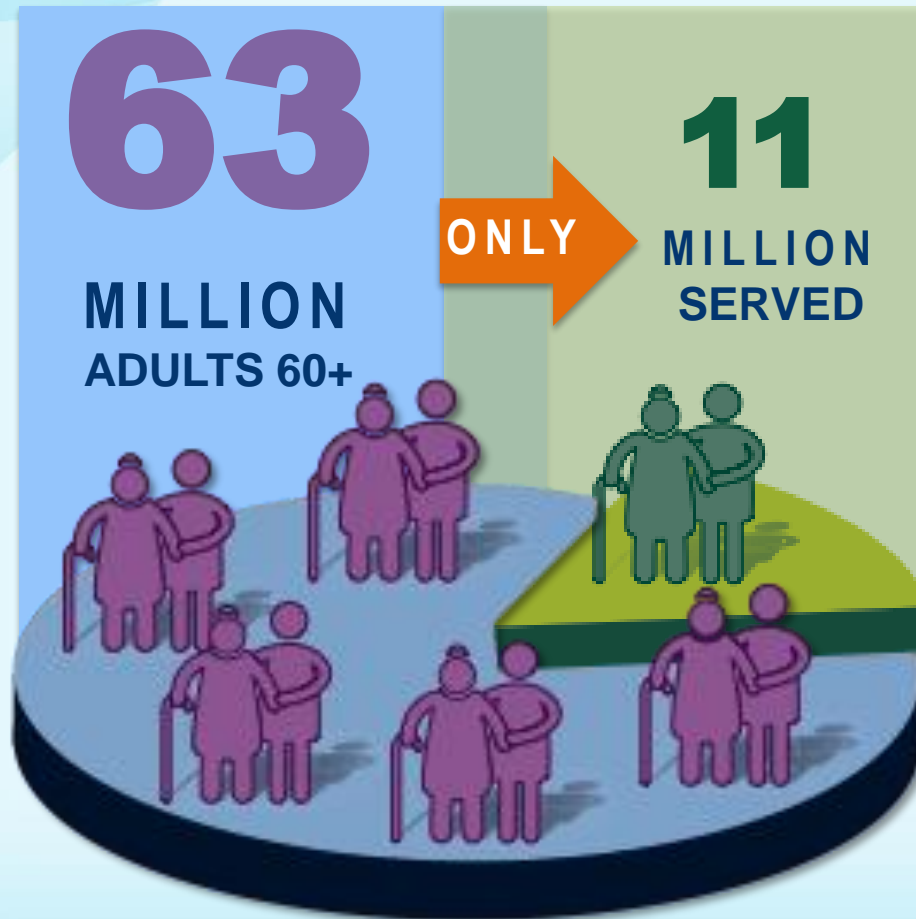
ONE IN FIVE
ADULTS 65+

FUNDING FOR SENIORS NOT KEEPING PACE

From 1980 to 2015

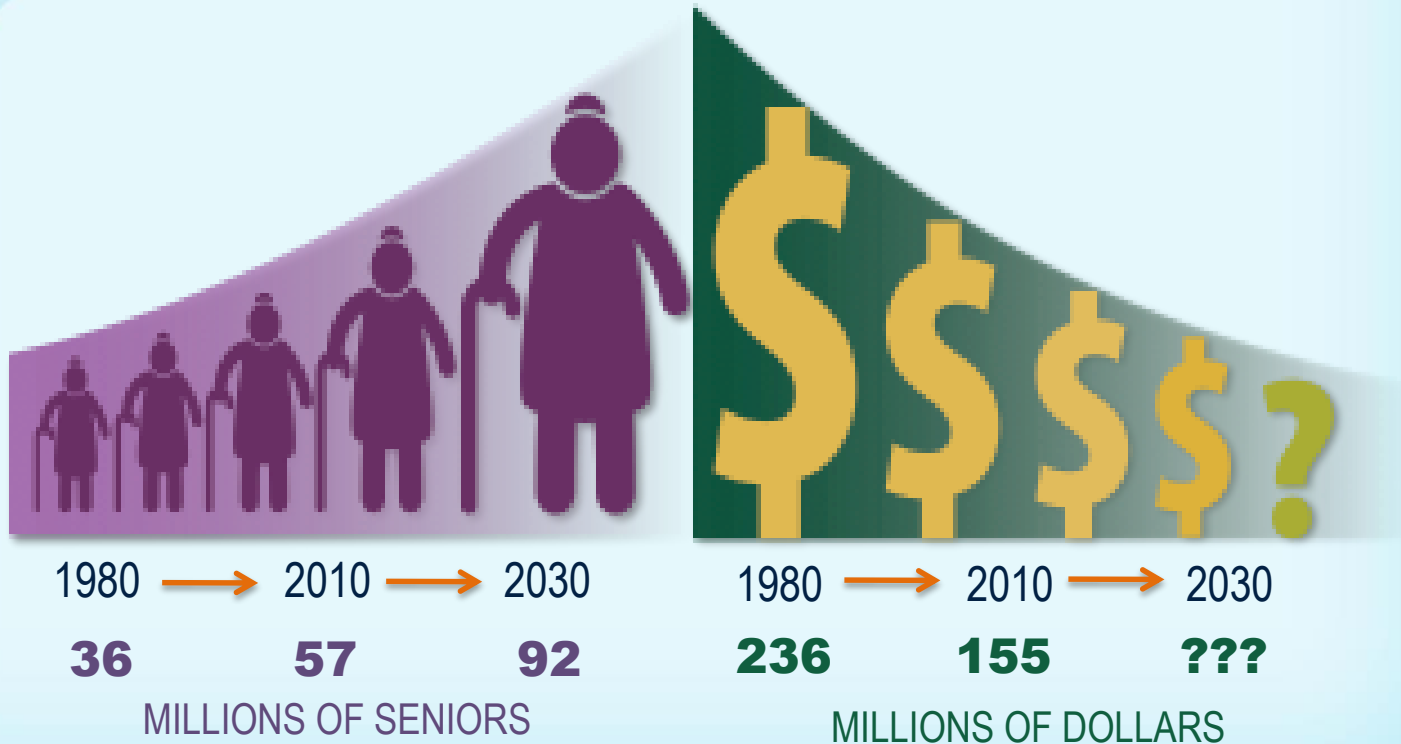


AGING SERVICES UNABLE TO MEET DEMAND



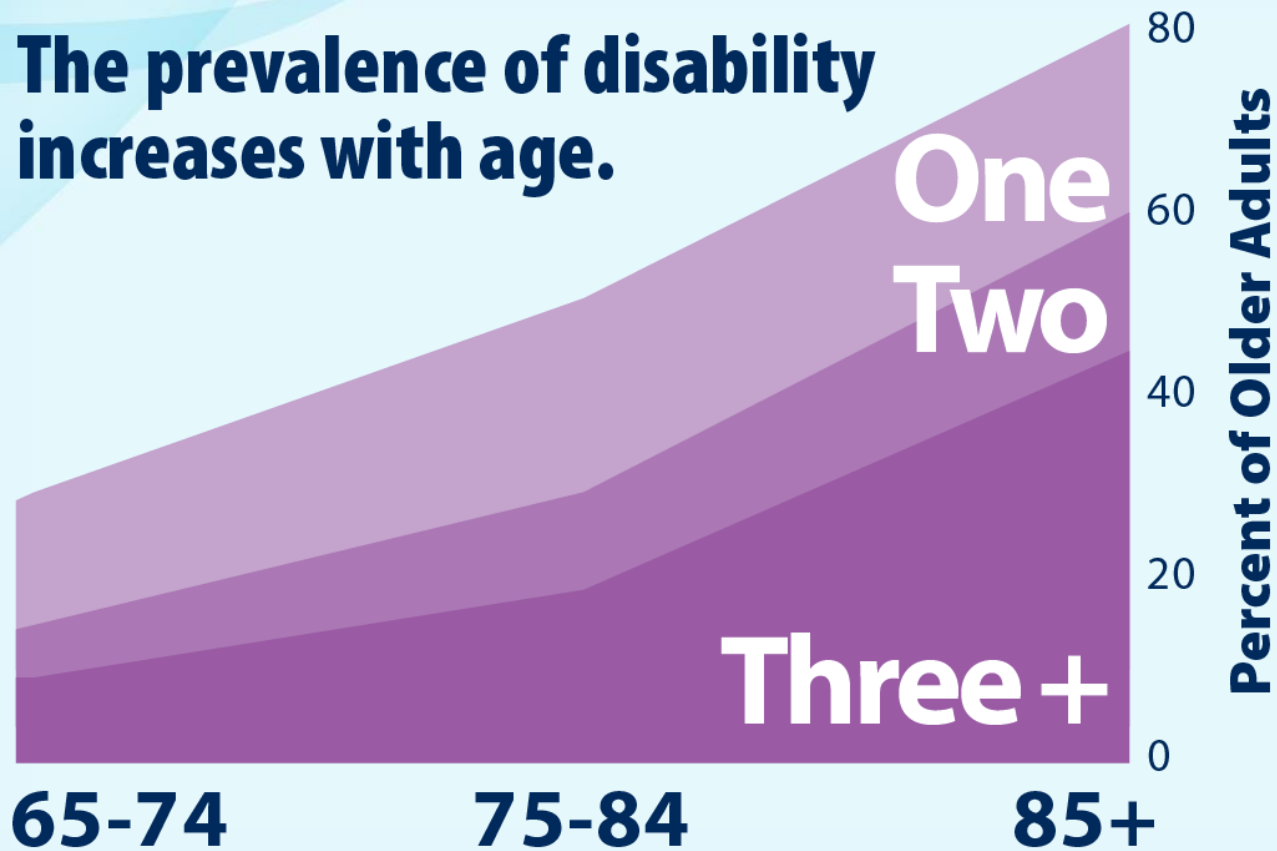
AGING SERVICES UNABLE TO MEET DEMAND

If these trends continue millions will be eligible and few will be served.

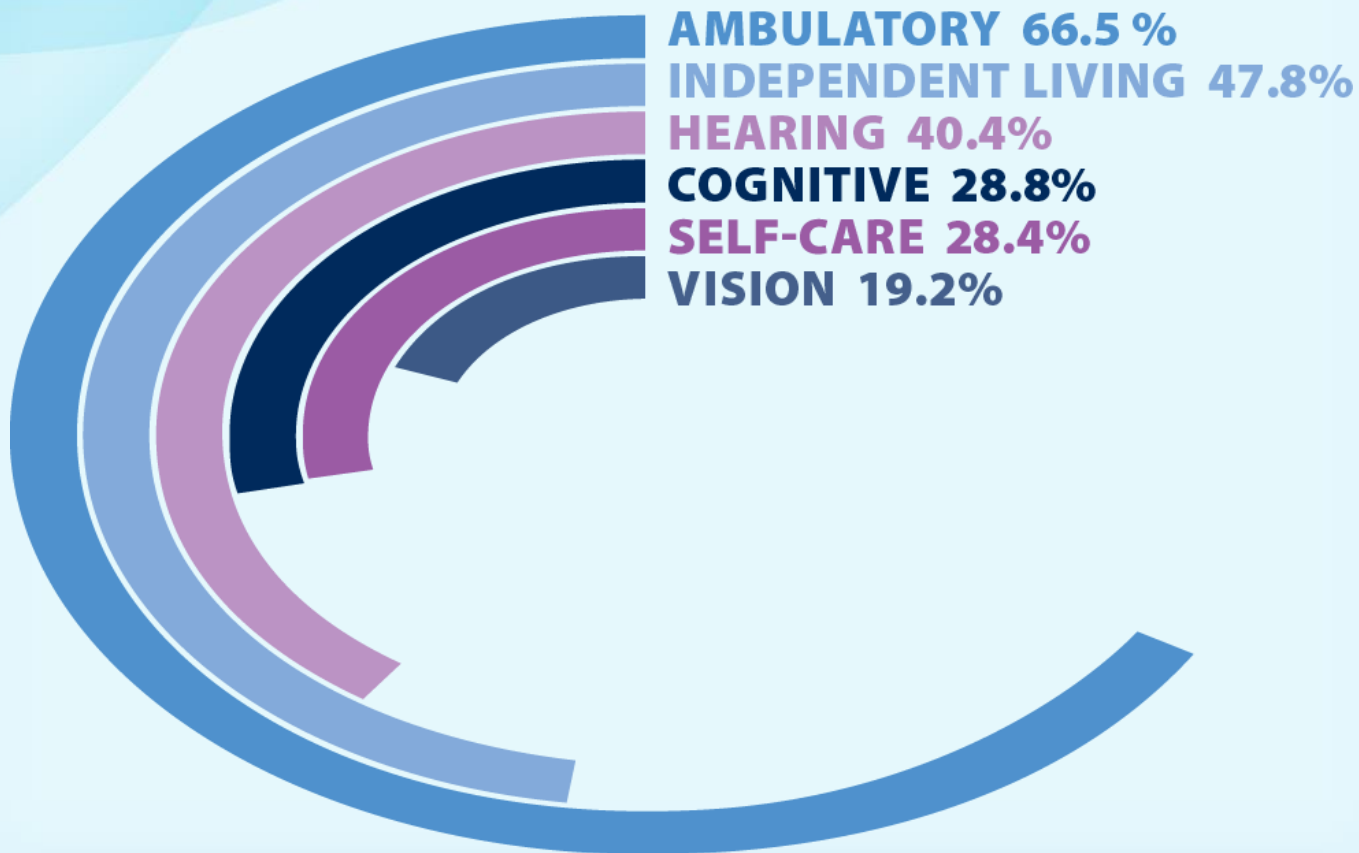


NUMBER OF DISABILITIES BY AGE

The prevalence of disability increases with age.



DISABILITIES BY TYPE Age 65+



MORE NEEDS TO BE DONE TO HELP SENIORS STAY HEALTHY

COST OF FALL-RELATED INJURIES



(w/ \$8.76 billion attributed to Medicaid)

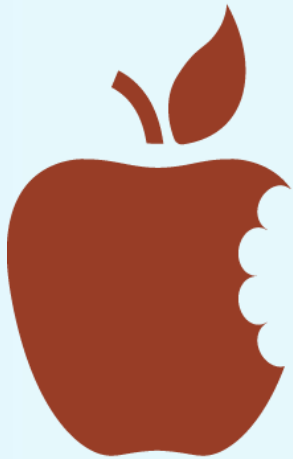
MORE NEEDS TO BE DONE TO HELP SENIORS STAY HEALTHY



An AARP study reports that senior hunger attributes \$130 billion in avoidable health care costs.

8% of Nebraskan households with someone over age 60 are food insecure.

MORE NEEDS TO BE DONE TO HELP SENIORS STAY HEALTHY



DENTAL CARE

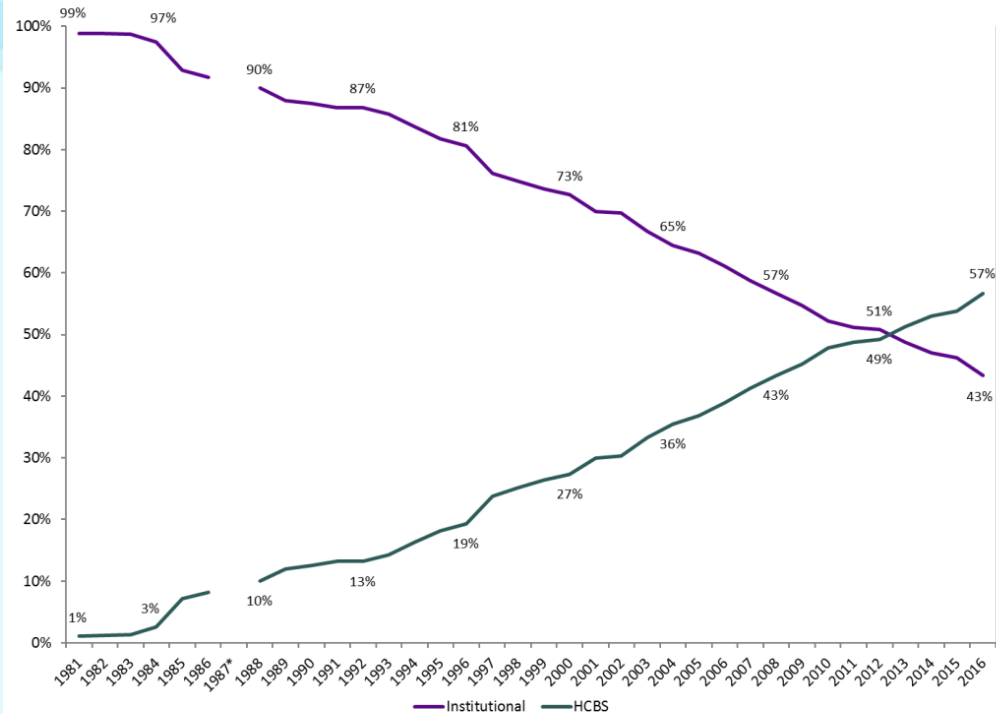
16% of seniors have no natural teeth

800,000 ER visits for dental conditions per year

NO Medicare coverage for dental care

HOME & COMMUNITY BASED SPENDING AS A PERCENTAGE OF TOTAL MEDICAID LTSS SPENDING SURPASSED INSTITUTIONAL SPENDING

Figure 8. Medicaid HCBS and Institutional LTSS Expenditures as a Percentage of Total Medicaid LTSS Expenditures, FY 1981–2016

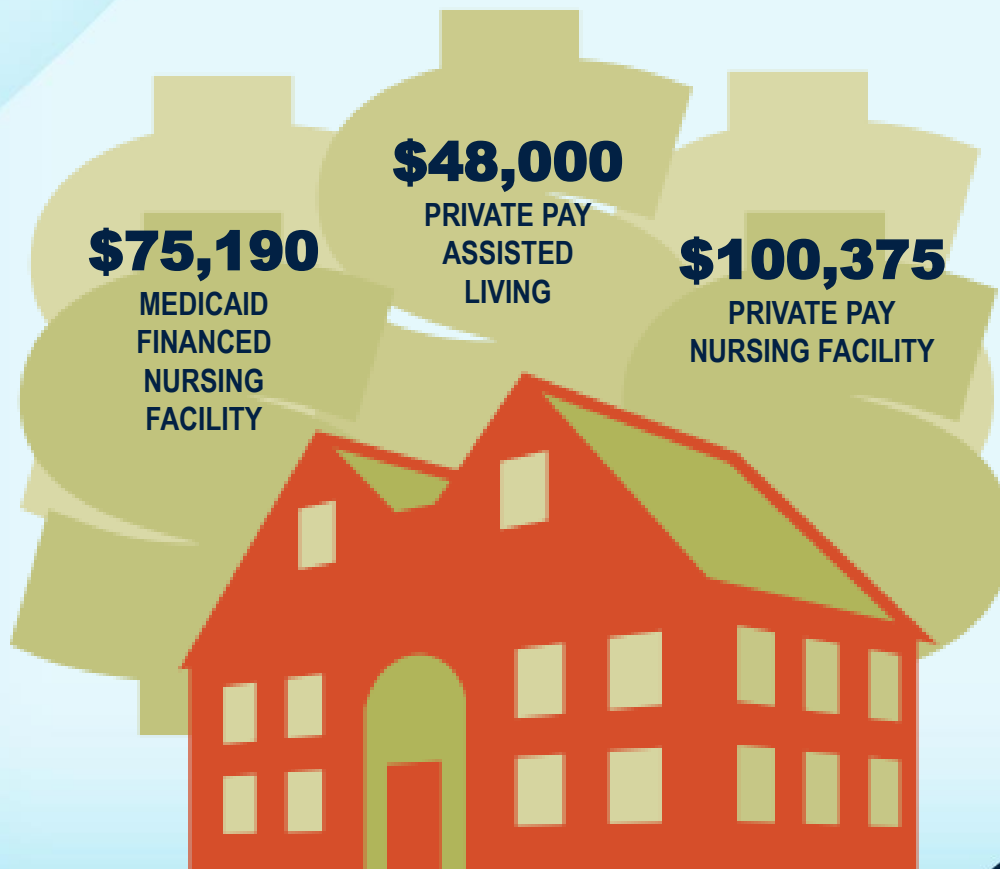


Data for FY 2014 through 2016 do not include LTSS within a large California managed care program. Data do not include expenditures through managed care organizations before 2008, and for certain states and program authorities starting in 2008. See Appendix A for more information.

*ICF/IID data for FY 1987 were nearly double expenditures for FY 1986 and for FY 1988. The reason for the one-time reported increase in expenditures is not known, and data from this outlier year were excluded.

AGING IN PLACE IS COST EFFECTIVE

Annual Facility Care Costs



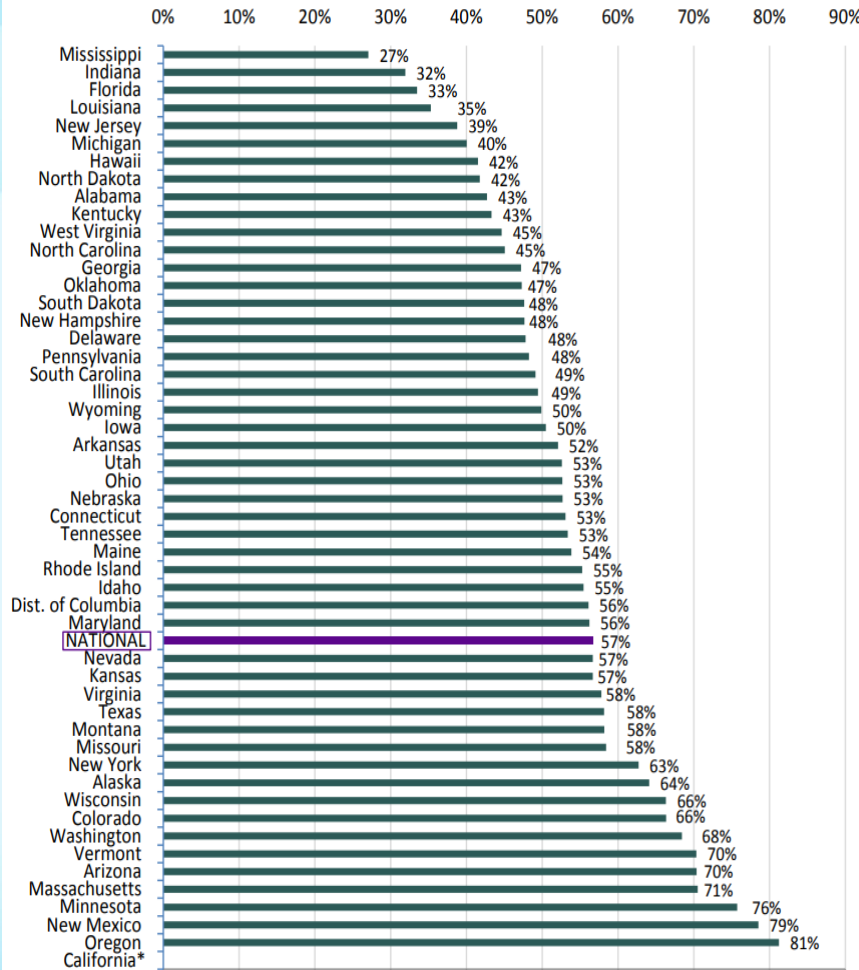
AGING IN PLACE IS COST EFFECTIVE

Annual Home and Community Care Costs



Medicaid HCBS Expenditures as a Percent of Total Medicaid LTSS

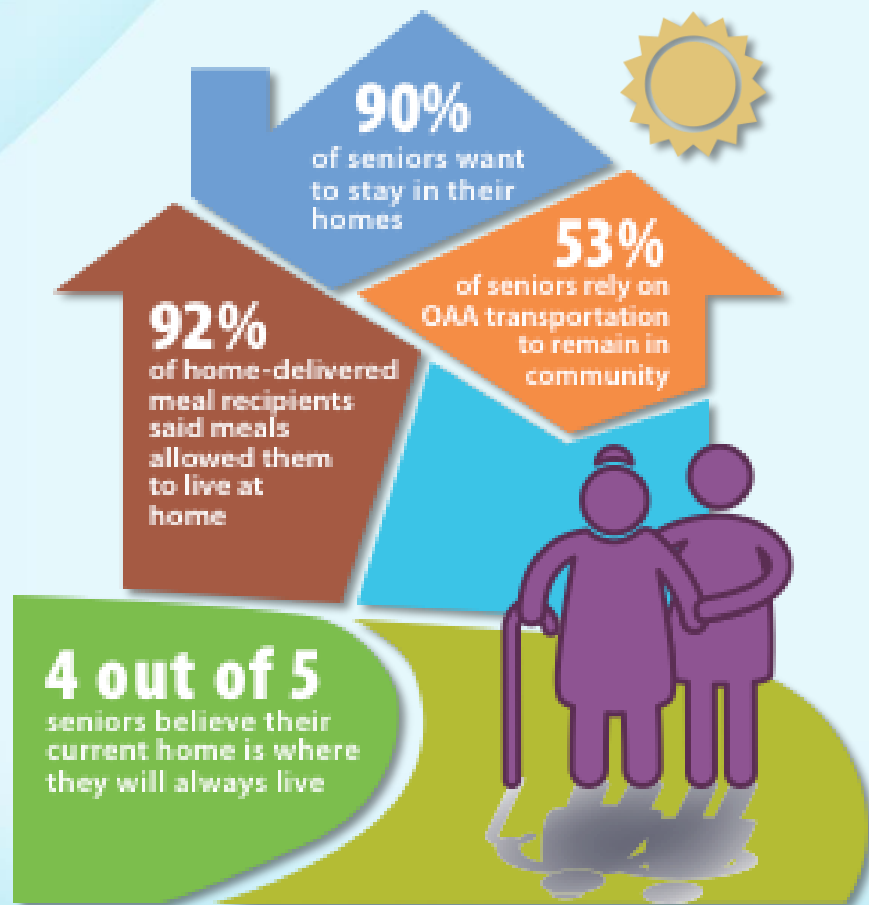
Figure 9. Medicaid HCBS Expenditures as a Percentage of Total Medicaid LTSS, by State, FY 2016



In FY16 only 28.2% of people with disabilities and older Nebraskans were served in HCBS settings; compared to 80.4% of individuals with intellectual and developmental disabilities.

OLDER AMERICANS ACT SERVICES

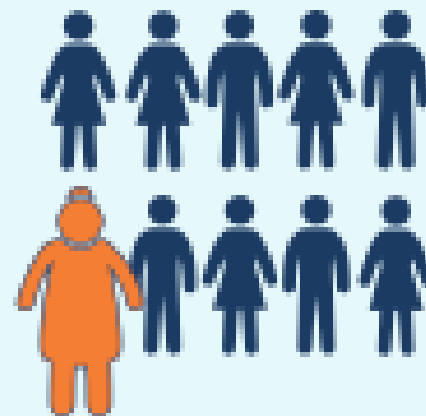
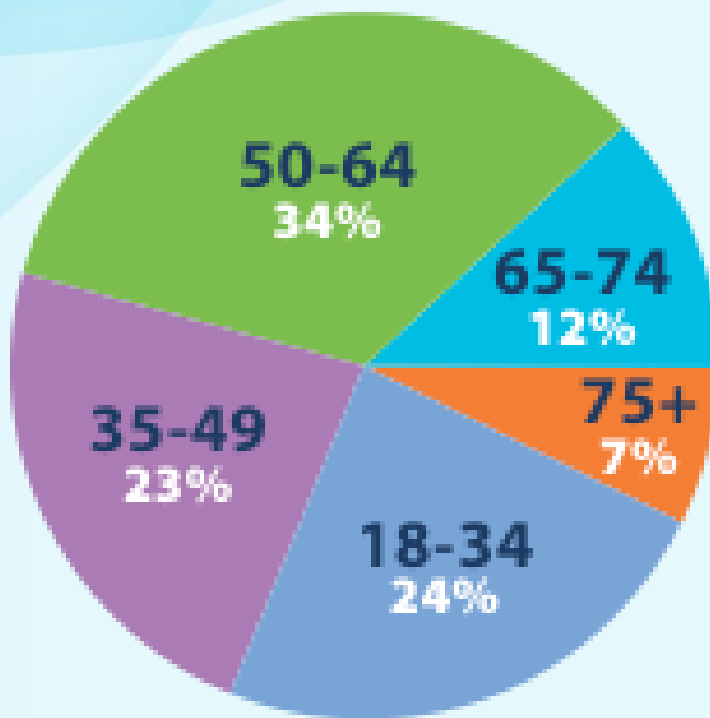
Help Seniors Stay at Home



WHO ARE CAREGIVERS?



WHO ARE THE CAREGIVERS?

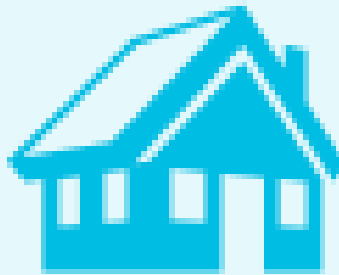


**1 in 10
Caregivers
are 75 or
Older**

WHERE DO CARE RECIPIENTS LIVE?



48%
his/her home



35%
**caregiver
home**



11%
**nursing facility,
assisted living,
retirement community**



6%
**someone
else's
home**

CAREGIVER TASKS



57% assist with medical/nursing tasks



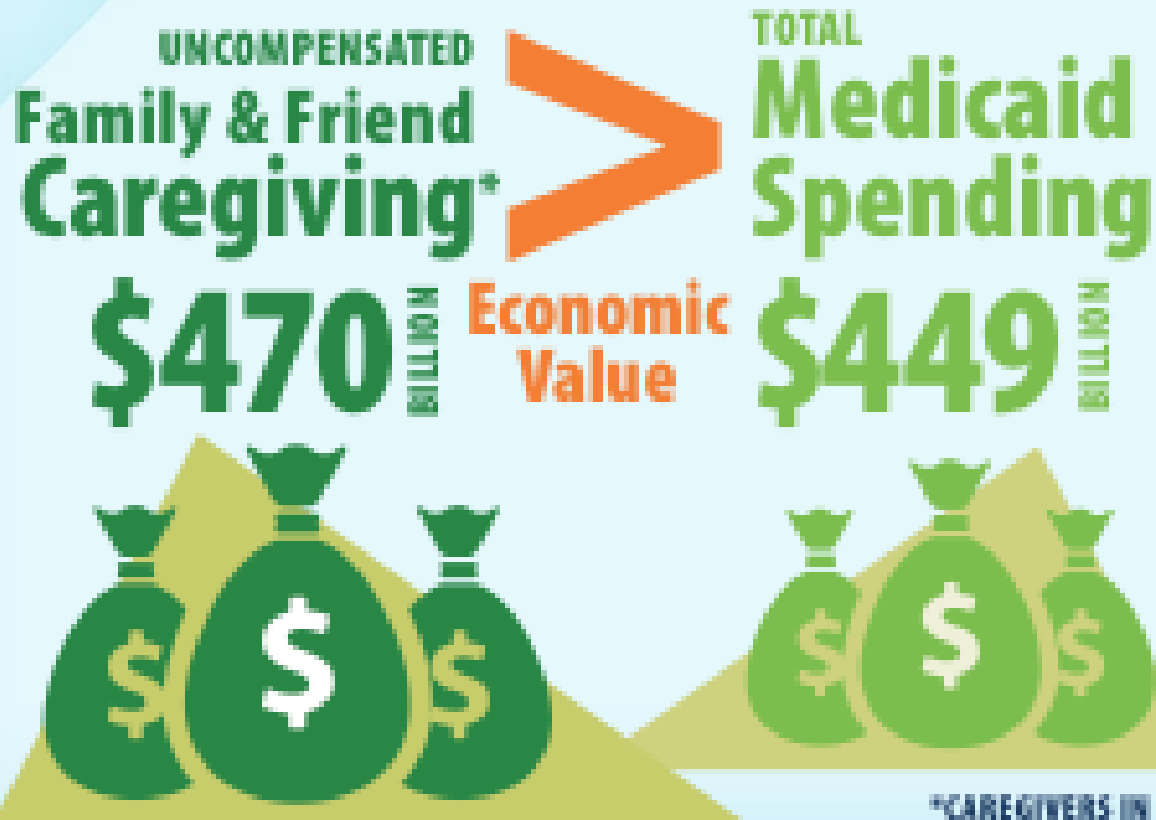
78% who provide medical/nursing tasks are managing medications, and administering IVs, injections, and medications

CAREGIVER SERVICES UNABLE TO MEET DEMAND

8 OUT OF **10** COULD USE MORE INFORMATION AND SUPPORT



THE GROWING VALUE OF CAREGIVING



PROFILE OF CAREGIVERS IN AMERICA

- 82% care for 1 adult
- 15% care for 2 adults
- 3% care for 3+ adults

On average, caregivers help with 4.2 Instrumental Activities of Daily Living

- Caregivers by Race:
- 16.9% White
 - 19.7% Asian American
 - 20.3% African American
 - 21% Hispanic

\$28+ billion in lost productivity for full/part-time employed caregivers

49% felt they had no choice in taking on this role

85% provide care to a relative

28% of caregivers have a child or grandchild living with them

8.4 million provide care to an adult with an emotional or mental health issue

17.9 billion hours of unpaid care for people with Alzheimer's & related dementias

600,000-700,000 families have an adult with I/DD living with aging family members with no future planning





For more information, please visit: www.nasuad.org

Or call us at: **202-898-2578**